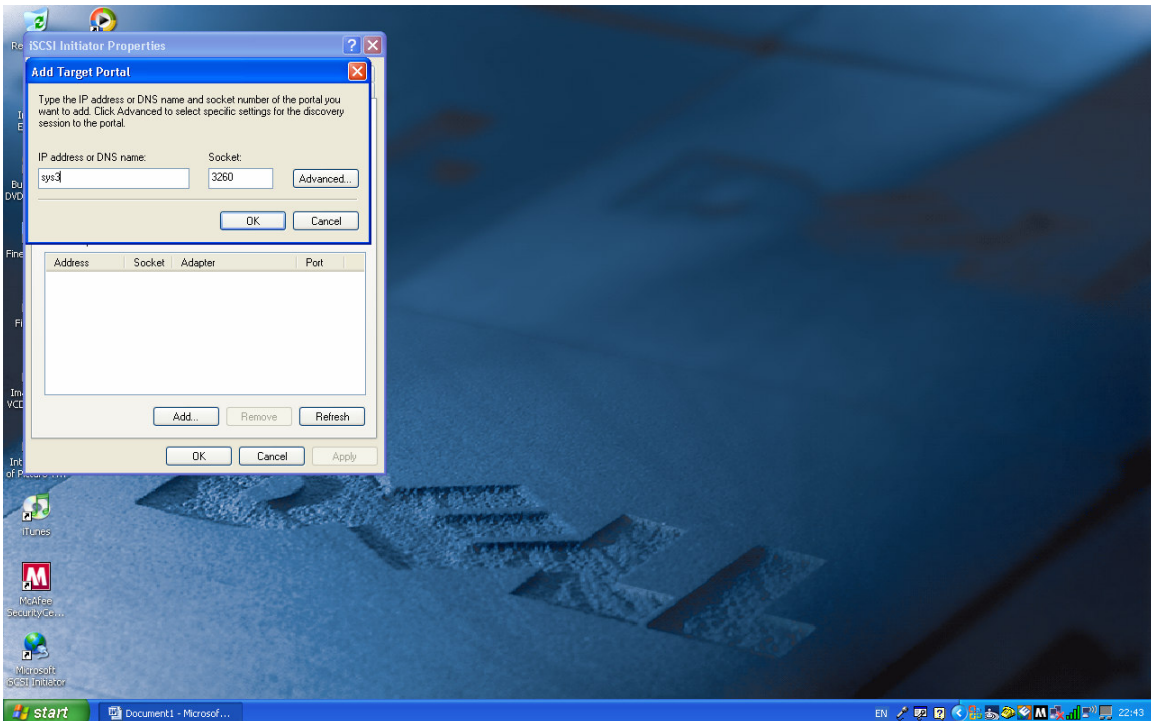
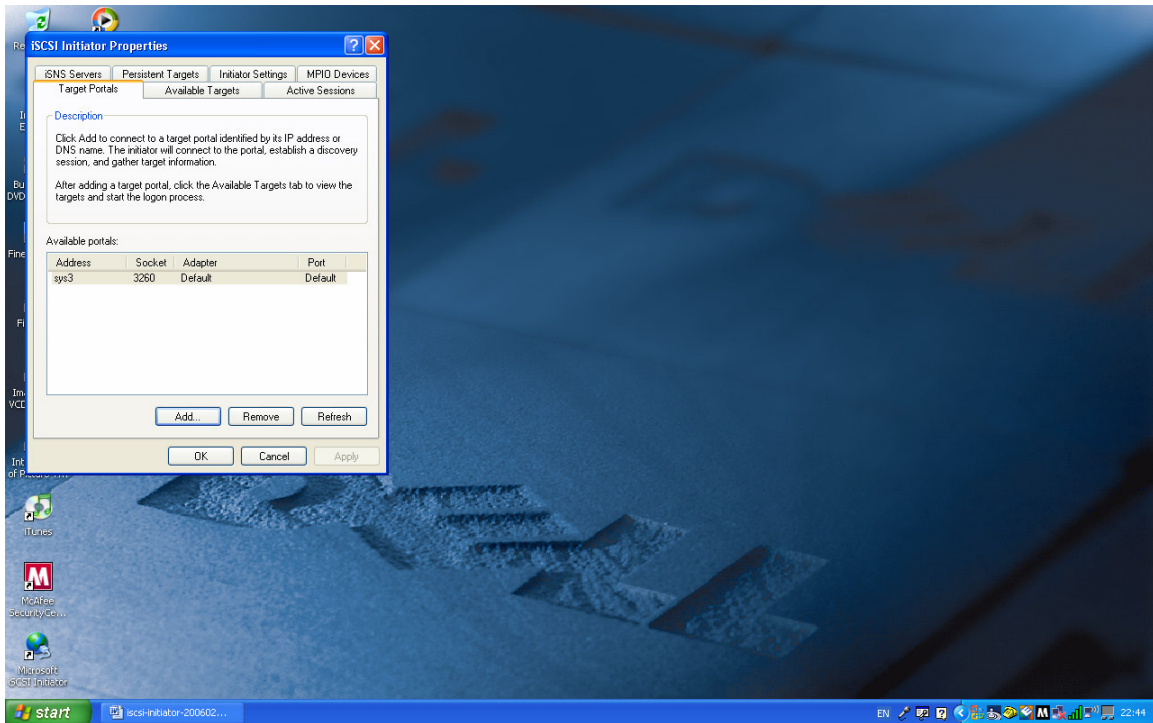


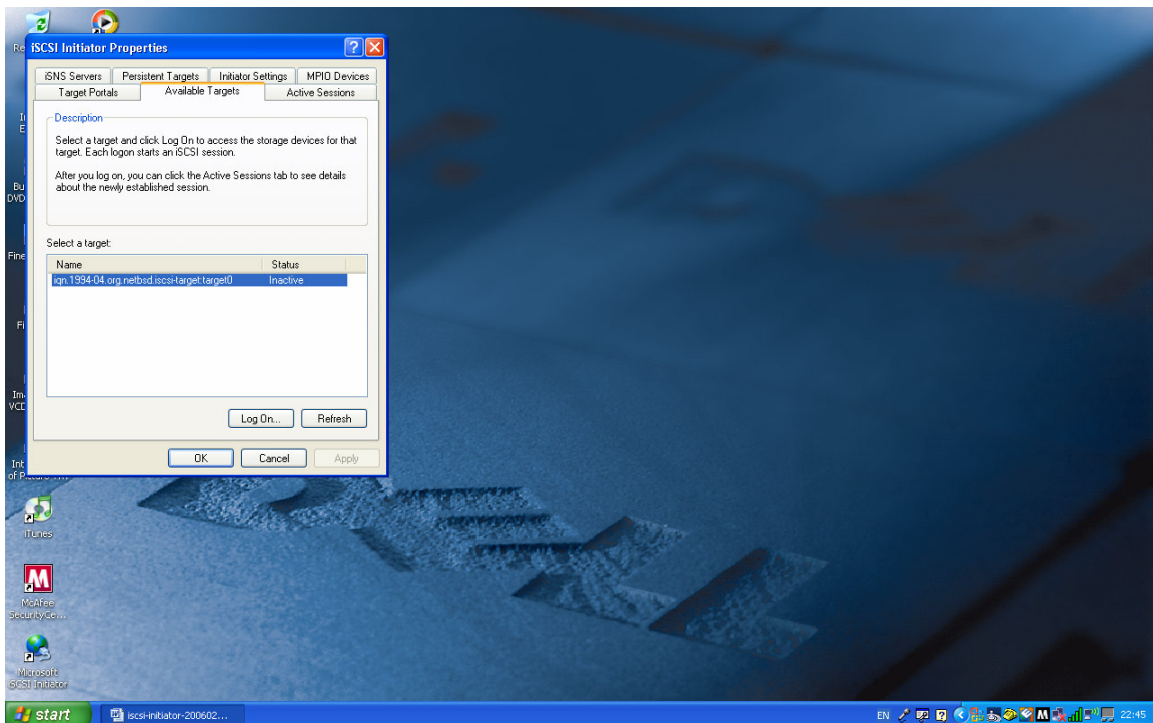
Picture showing the Microsoft initiator. You now have to add the target's hostname, so that we can connect up to the target which is running on this machine. Click on the "Add" button shown above:



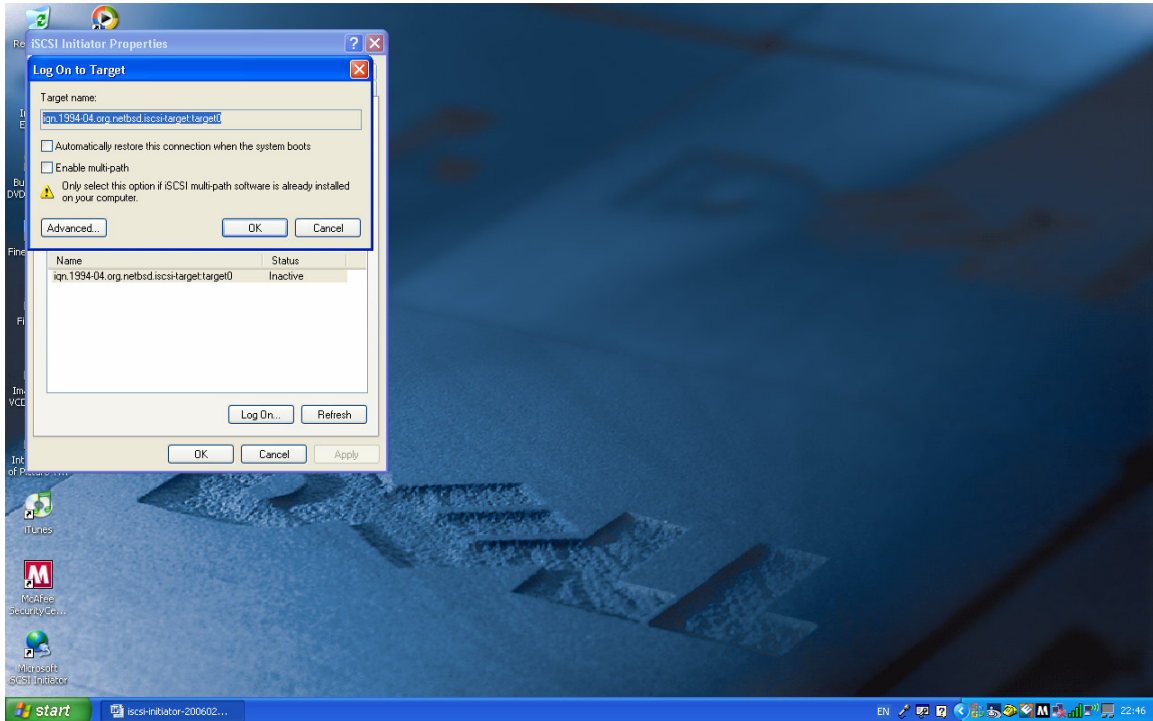
And the “Add Target Portal” dialog box appears. Fill in the hostname of the target, and click on the “OK” button, and the hostname should appear in the box:



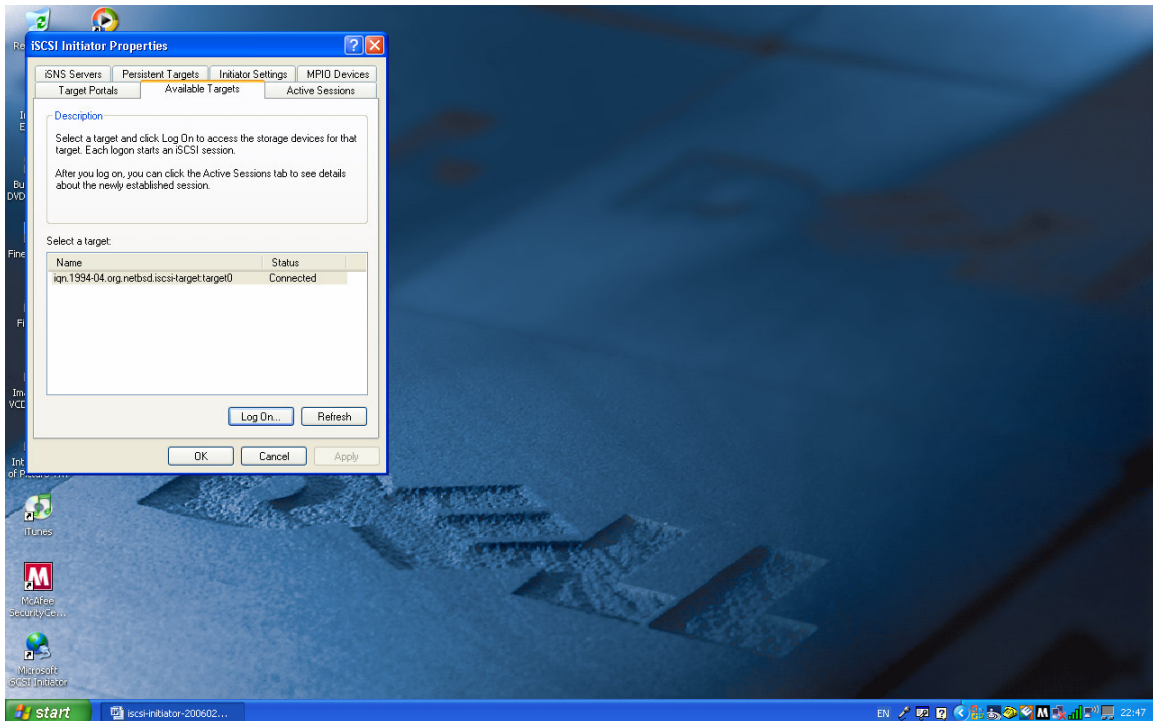
Next, click on the “Available Targets” tab.



The target's information has appeared, and is highlighted. Now click the "Log On" button, and a further dialog box appears:



Just click the "OK" button:

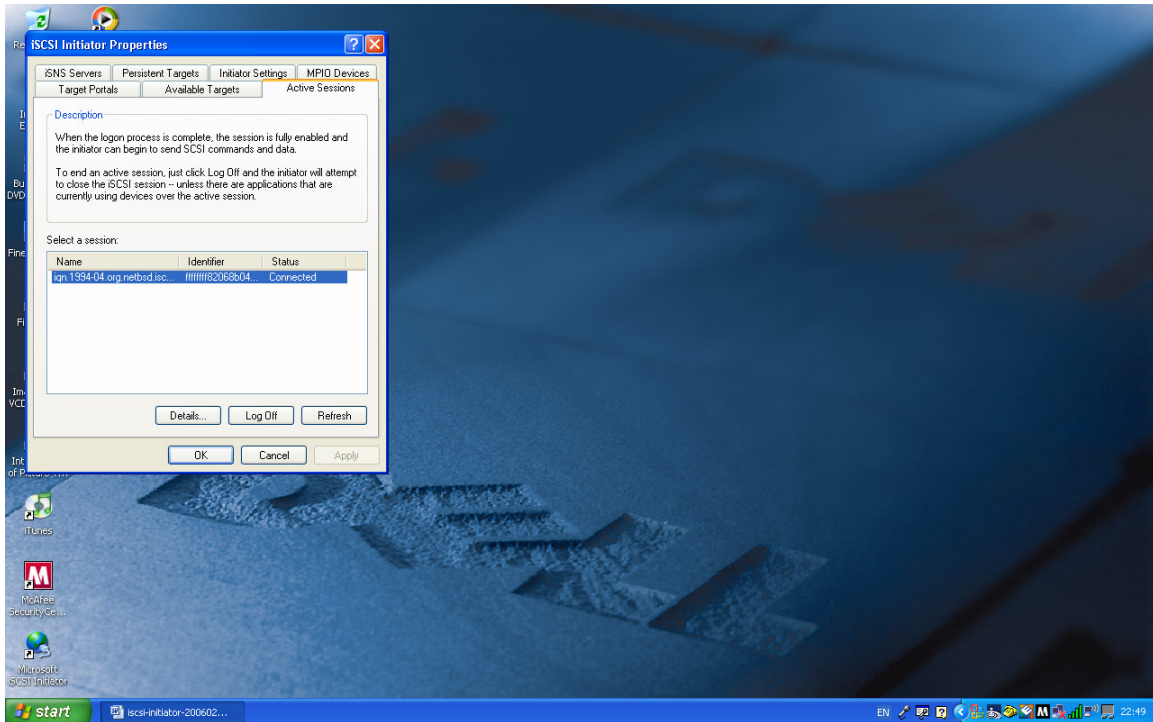




And the “Status” has changed to “Connected”. On the target machine, a message will have appeared in the messages file:

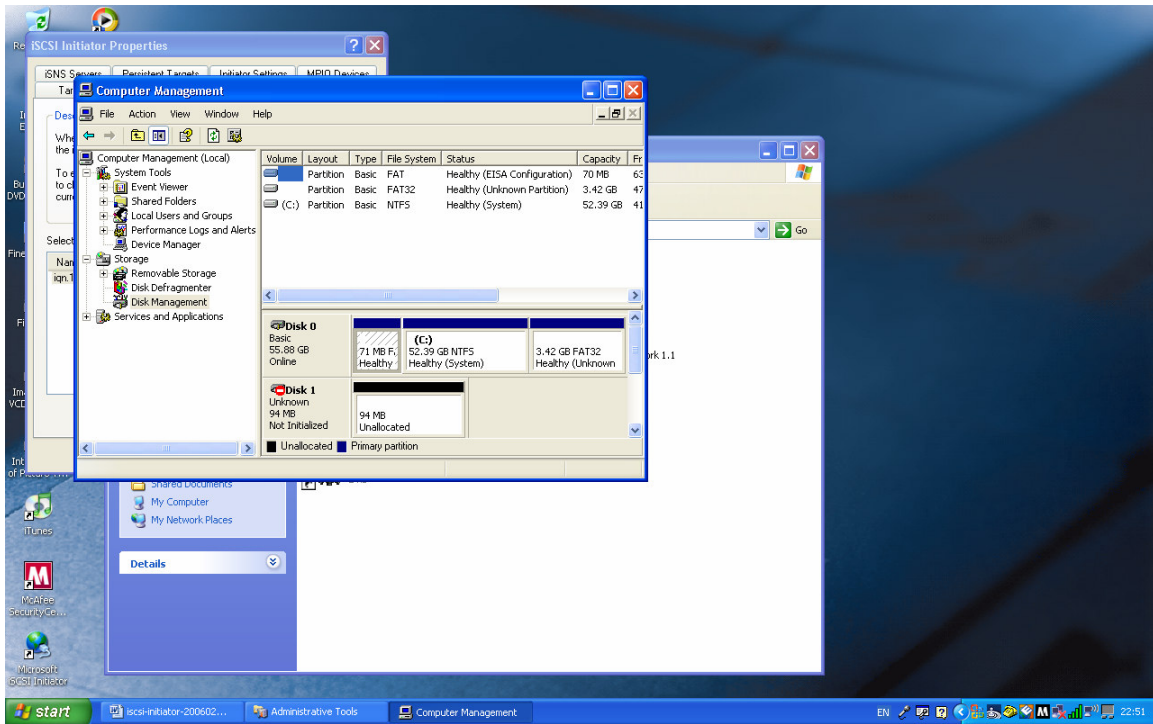
```
Feb 21 22:47:44 sys3 iscsi-target: > Normal login from iqn.1991-05.com.microsoft:inspiron on 10.4.1.5
```

Clicking on the “Active Sessions” tab will show the following:

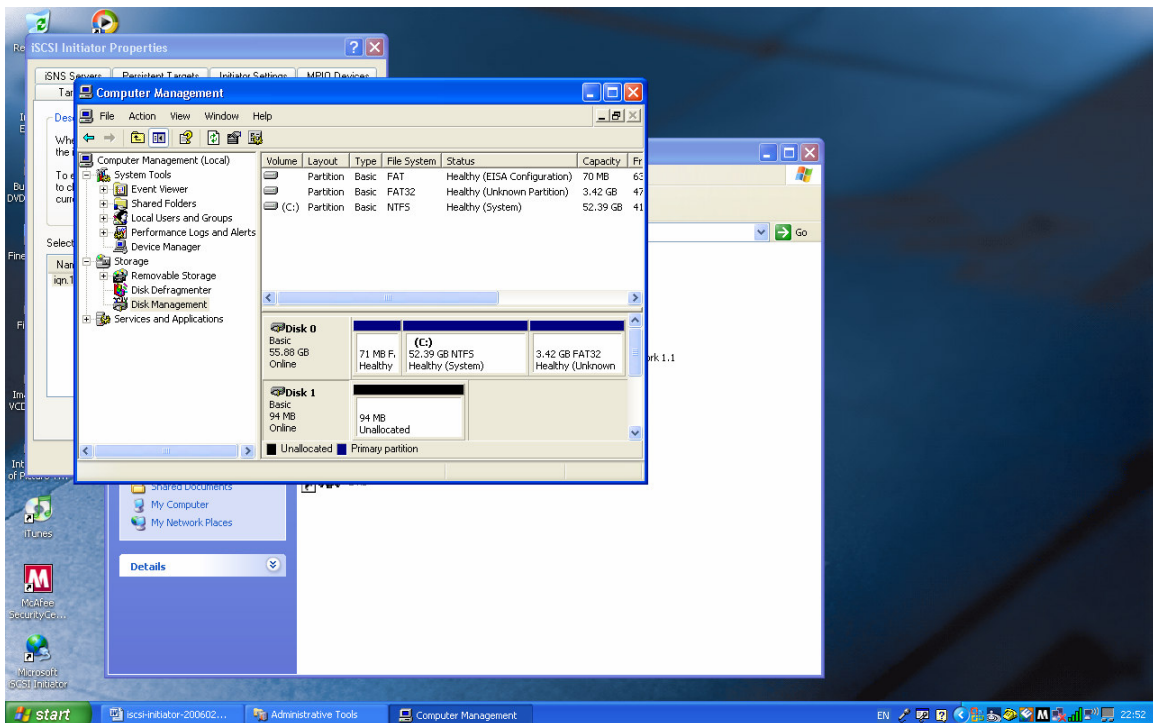


You can now make a file system on the Windows machine:

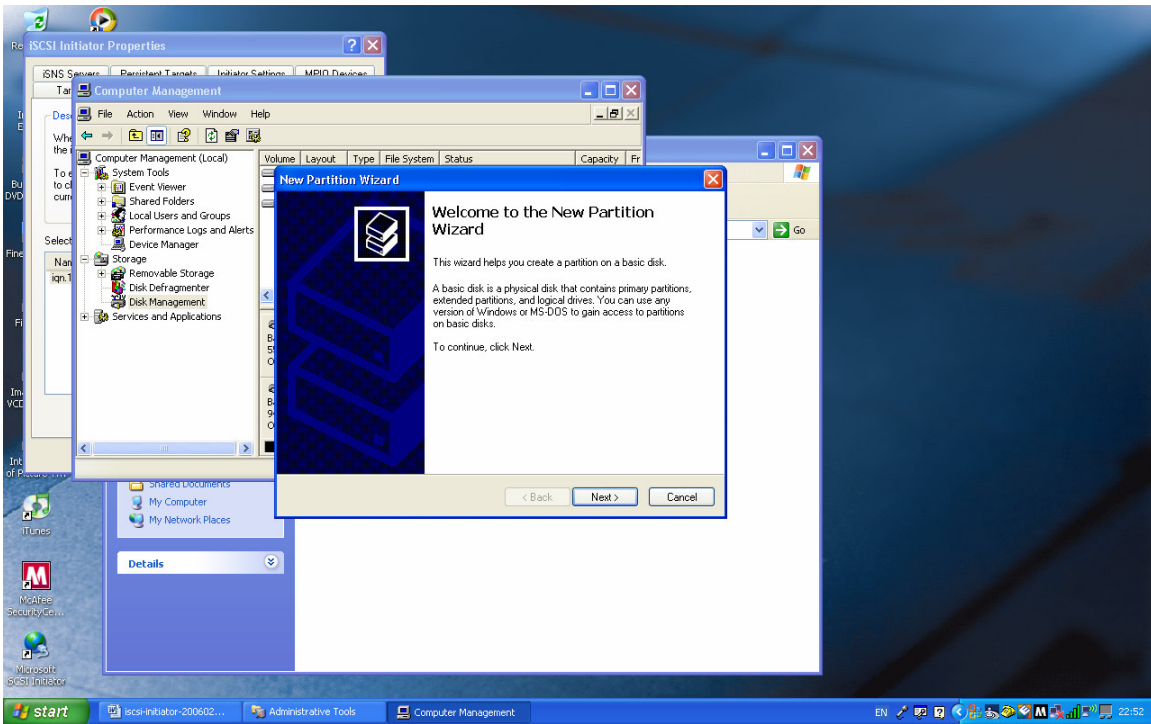
The Disk Management screen looks like this:



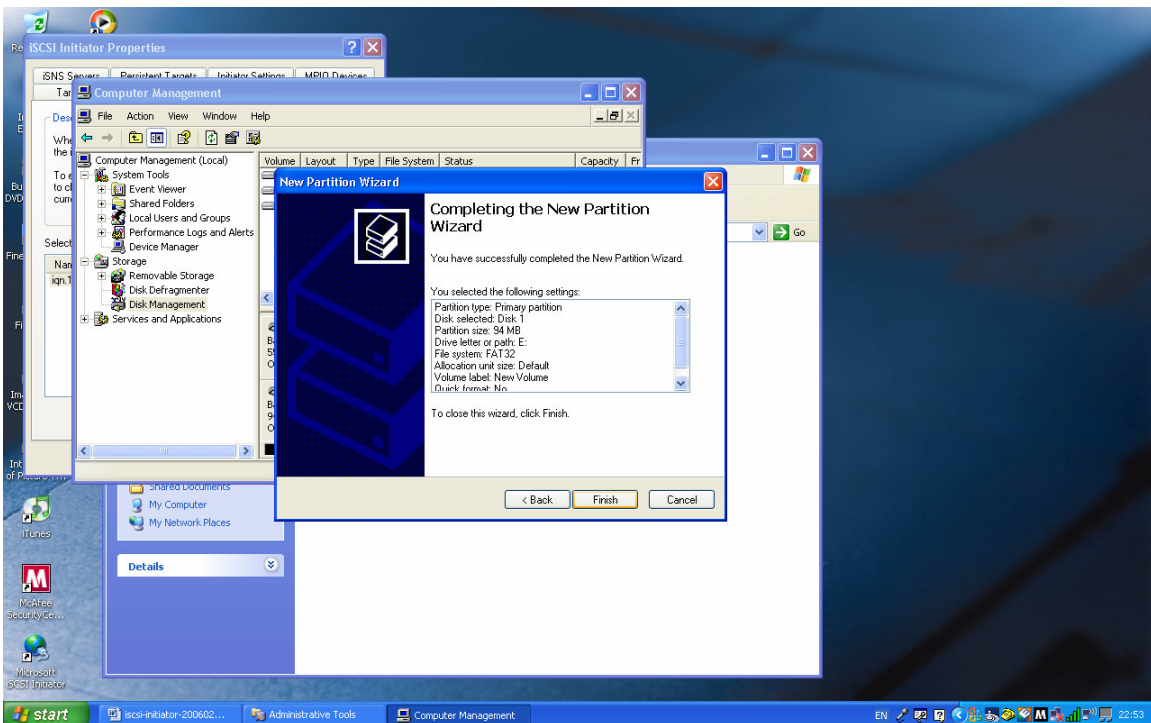
Right click on “Disk 1”, and initialize the disk:



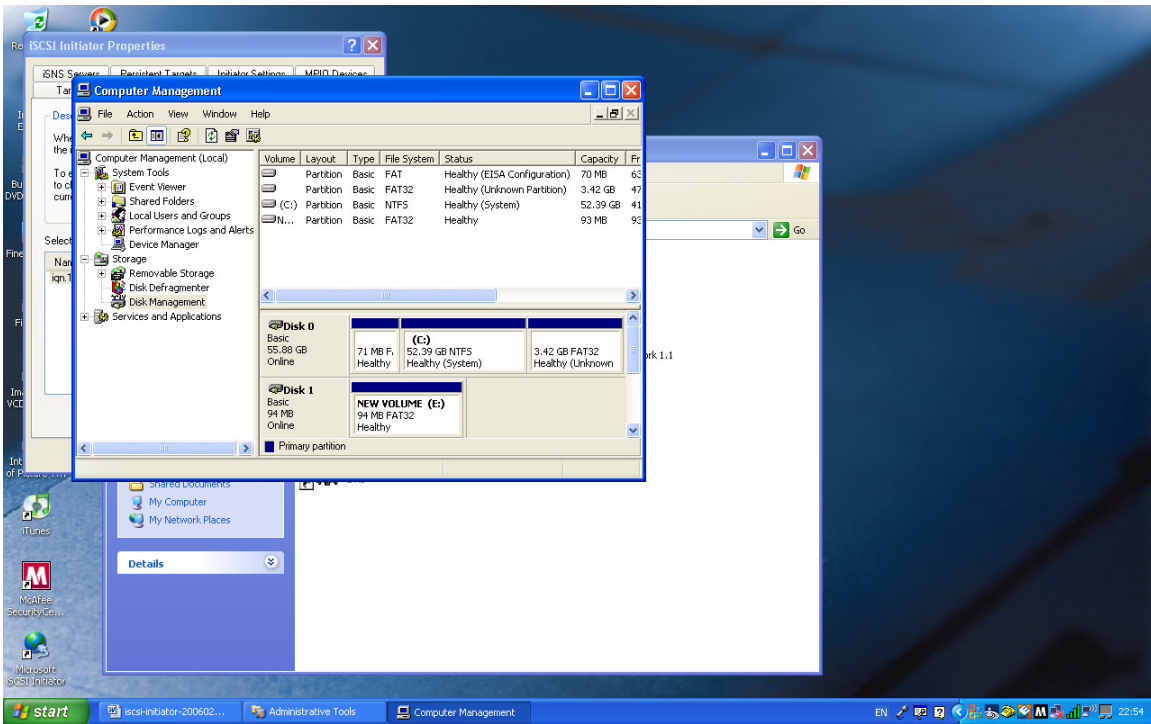
Now right-click on the part that says “Unallocated”, and you get the new disk wizard:



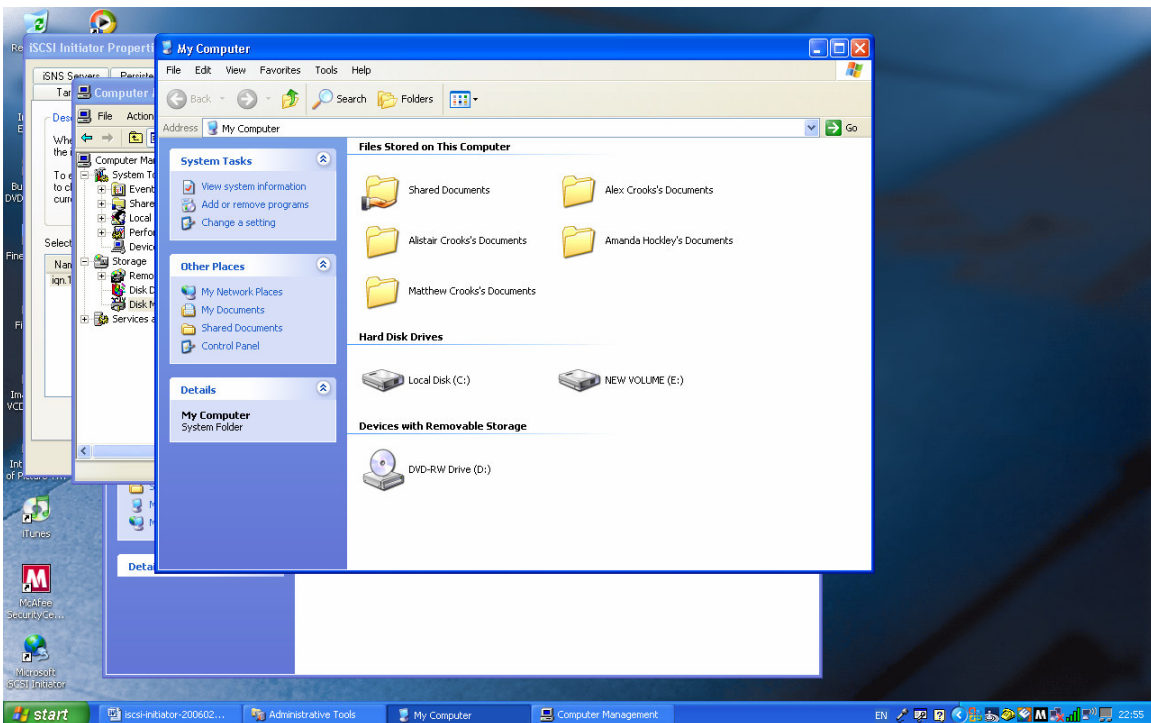
And selecting everything, you get to the end of the wizard dialog:



When the disk has been formatted, it looks like:

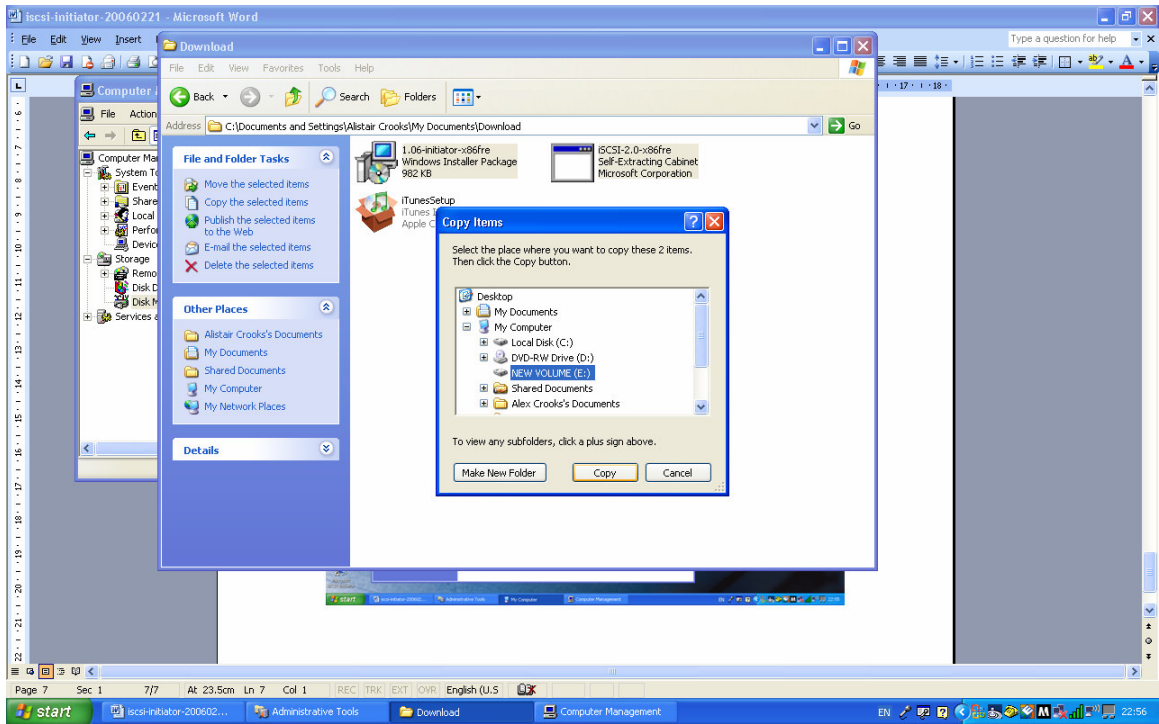


And you can now start to use the new disk:



I've selected two files, and copied them to the new volume:





And now they've shown up on the new volume:

