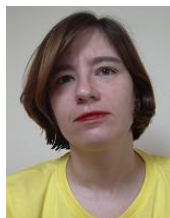


The Future of TmL: A Simulated End-to-End Environment for Mobile Enterprise Applications



Christian Kurzke
TmL Team Lead



Mauren Brenner



Fábio Fantato



Daniel Franco



Tools for Mobile Linux

First: What is “Mobile Linux”

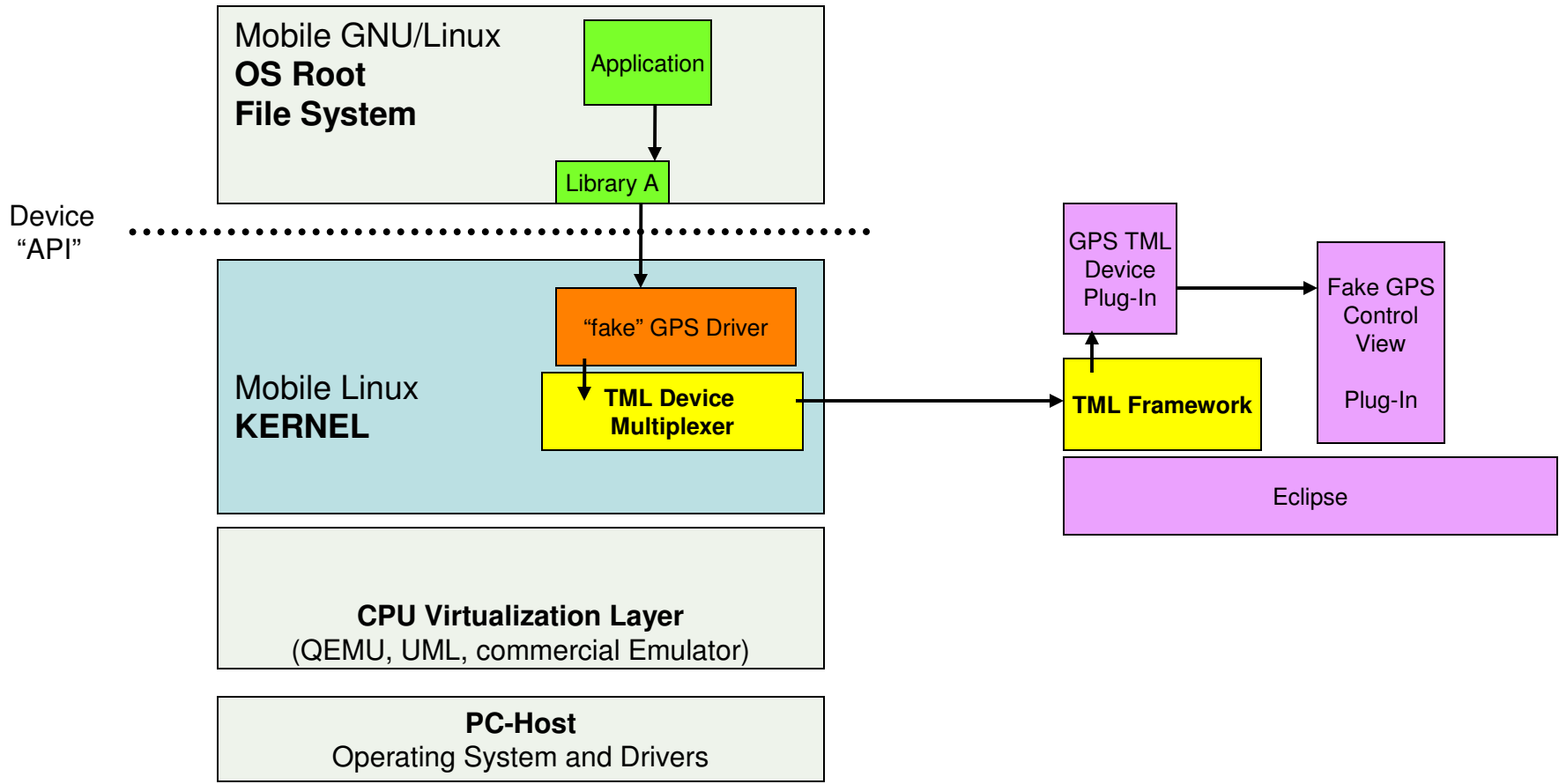
- ◆ Embedded devices running “specialized” Linux
 - Processors != x86
 - Devices != Desktop
- ◆ “Mobile”, Wireless (2G/3G)
 - Dynamic infrastructure
 - Enterprise connectivity

Tools?

- ◆ Create Applications, Distributed, Specialized
- ◆ Simulate Runtime Environment, End to End

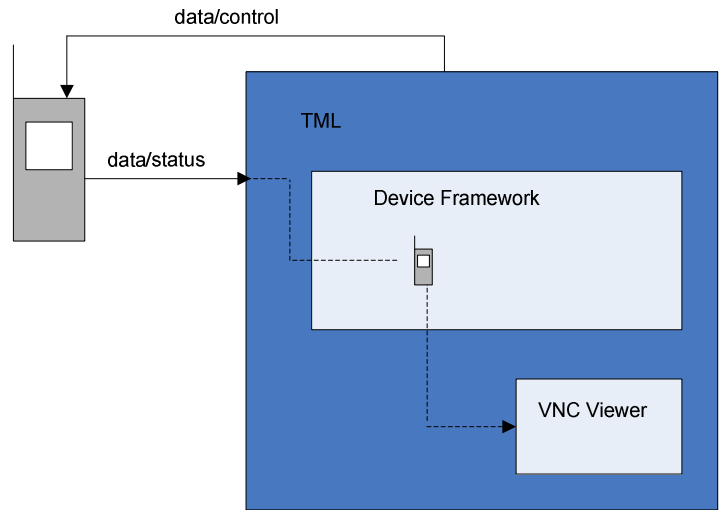


Mobile Linux Runtime



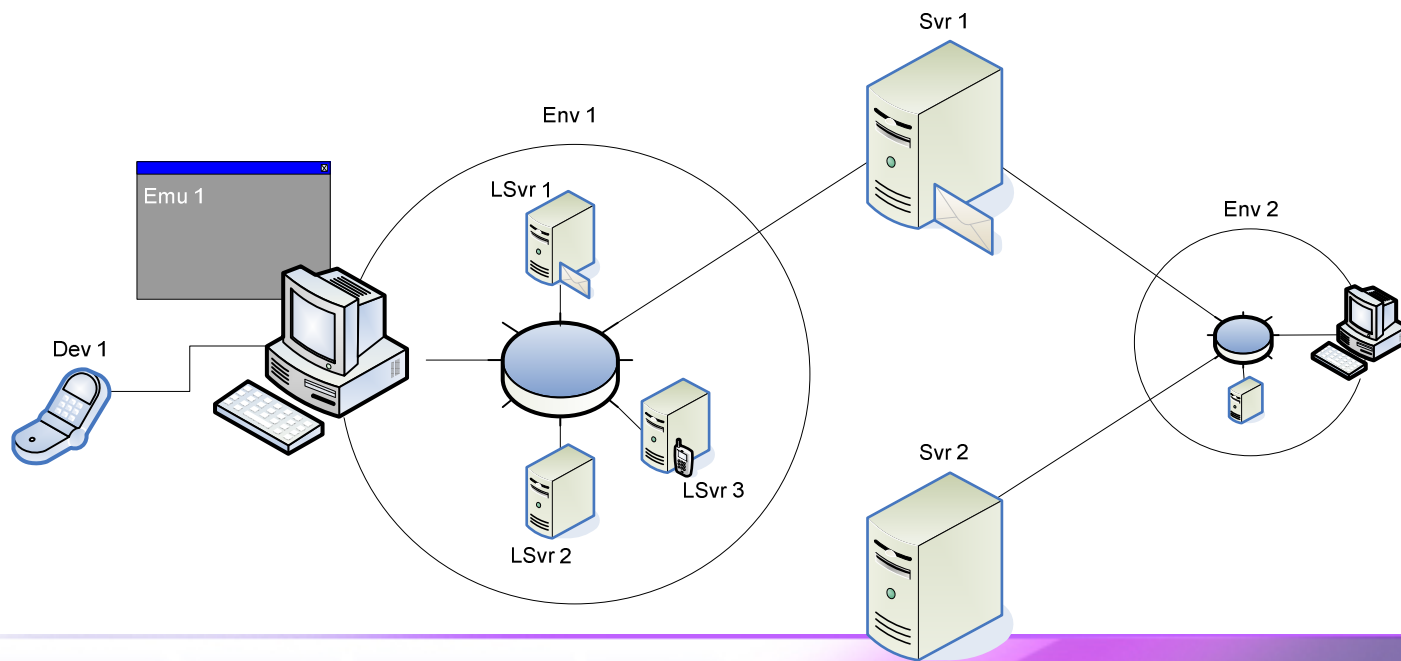
Tools for mobile Linux (TmL): Current Scope

- Current scope
 - ◆ Device Framework, to integrate devices and emulators into the Eclipse IDE
 - ◆ VNC Viewer, to provide display visualization capabilities to such devices and emulators



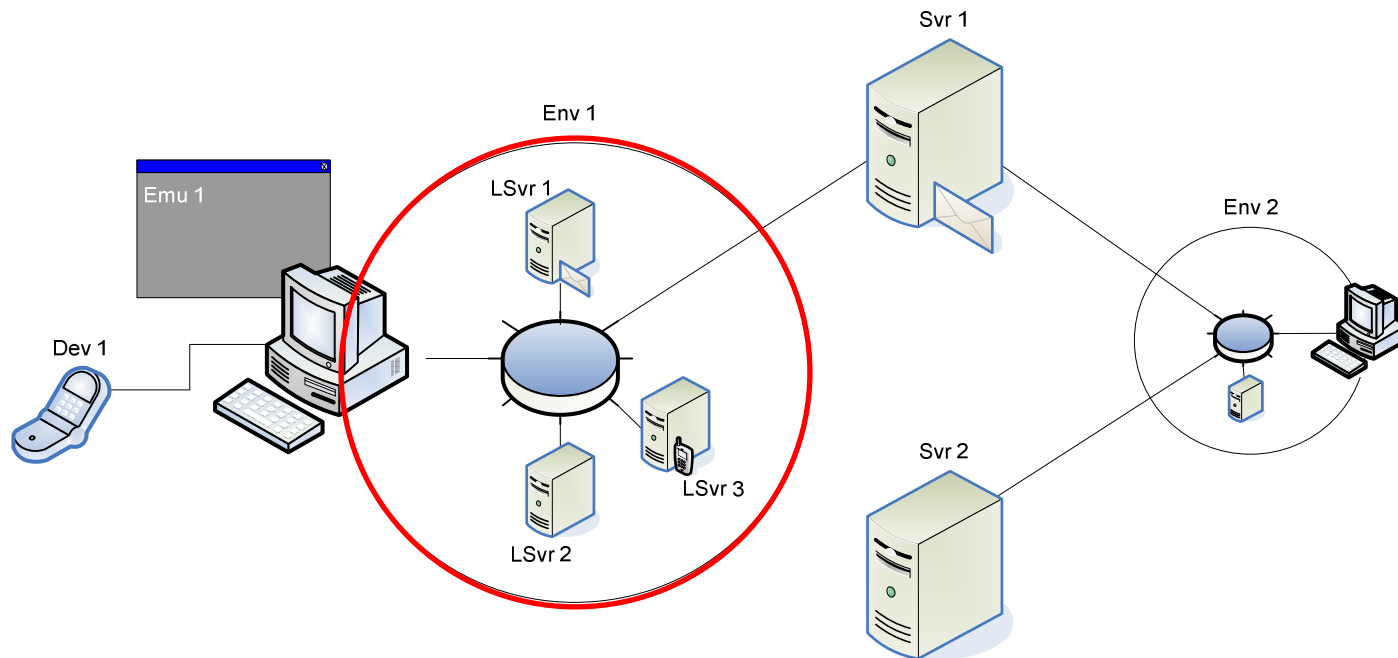
Tools for mobile Linux (TmL): Future Scope

- Simulated end-to-end environment
 - ◆ Integrate devices and emulators into a common simulated network infrastructure
 - ◆ Allow testing of complex mobile enterprise applications



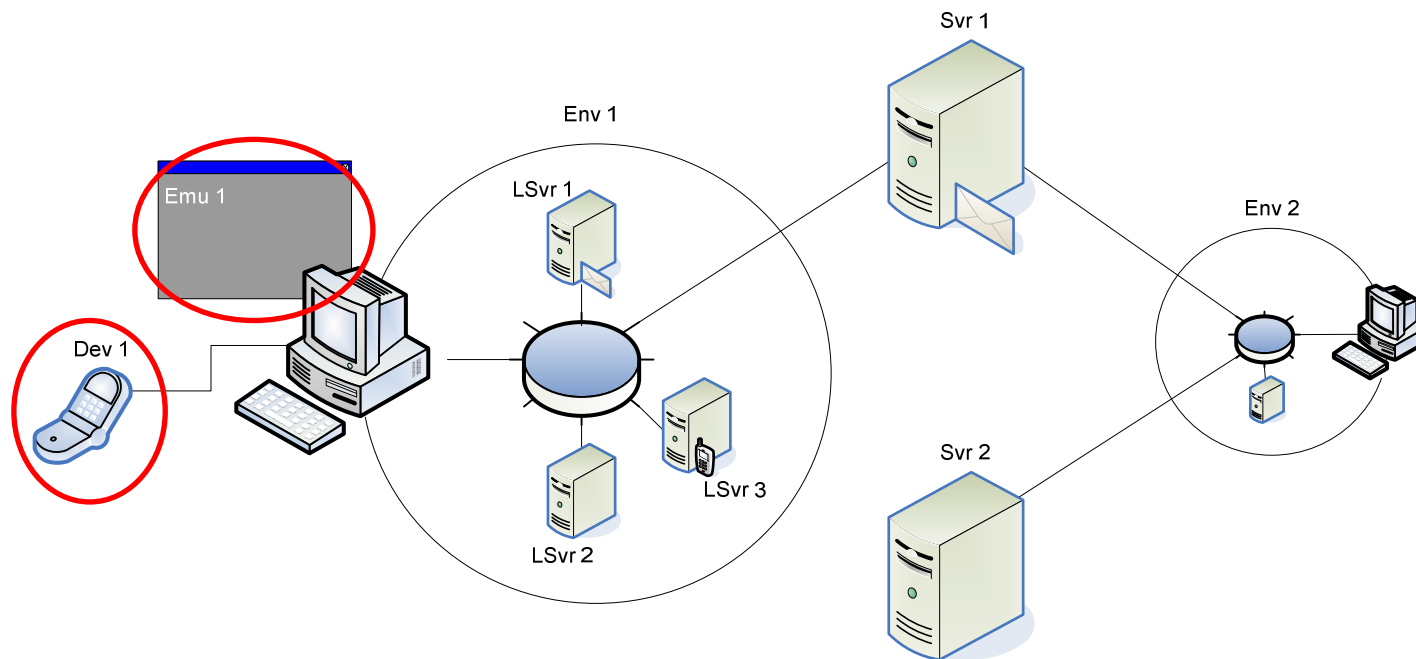
Simulated End-to-End Environment

- Simulated network infrastructure
 - ◆ Data communications and telecommunications



Simulated End-to-End Environment

- Network nodes
 - ◆ Devices and emulators integrated by means of the Device Framework



Simulated End-to-End Environment

- GEF-based editor
 - ◆ Representation of the network nodes
 - ◆ Interconnection of network nodes using the simulated network infrastructure



Questions & Answers

